

EDSWG EDSWG/A

CE 0682

Keypad

IS0339A03MM_10-03-2016



Nice SpA
Oderzo TV Italia
info@niceforyou.com



A. General description

- 1) Allows **keyless entry** and exit, by punching a secured combination code of numbers.
- 2) Up to 3 different codes A, B, C, codes can be from 1 to 8 numbers
- 3) Suitable for opening Nice equipment. For other brands receiver required
- 4) Designs to be installed 20-30Meters. Max range 50Meters from the equipment (gate, Garage door, etc.).
- 5) No wiring required. The unit is wireless, and battery powered.
- 6) For flat vertical surface installation as wall, posts etc.
- 7) Weatherproof for outdoor, and indoor installations - IP54
- 8) Battery to last about 24 month (with 10 operations per day).
- 9) Battery is easy to replace by the user (required some technical skills)
- 10) Back light - the pads light up with the first press of a button

B. How to use the unit

- 1) Key-in your security code followed by the Letters A, or B, or C.
- 2) 6 seconds allowed between each press of a button.
- 3) Beep confirmation will be heard - see the table below.

BEEP SIGNALS	MEANING
1 short beep	Confirms a key press.
1 long beep	More than 6 seconds, try again form the beginning.
3 long beeps	<ul style="list-style-type: none">• For code programing - Code have been successfully changed• With regular use - Battery low -replace the battery, you will hear the beeps with the new battery stalled correctly
5 short beeps	<ul style="list-style-type: none">• something went wrong, re try again <p>Series of beeps over 2 sec. indicates that the batteries are exhausted and must be replaced</p>

C. **Maintenance**

This unit does not require any special maintenance. Check it occasionally for spiderwebs, dust. wipe and clean wet cloth

D. **Disposing of Battery**

Discharged battery contain pollutant substances and therefore must be recycle. Dispose battery at waste disposal, Battery world shop, or similar.

E. **Technical Specifications**

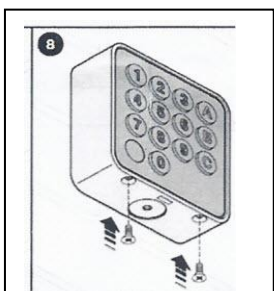
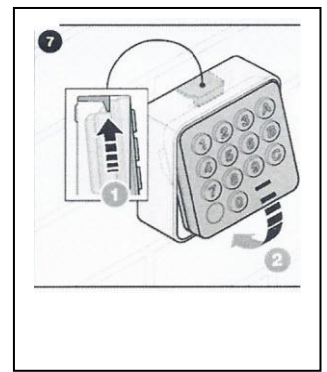
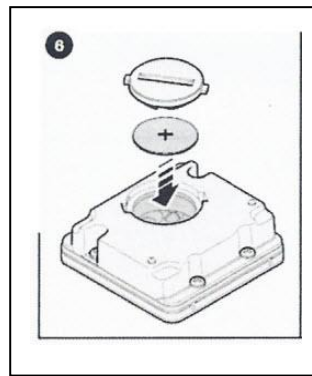
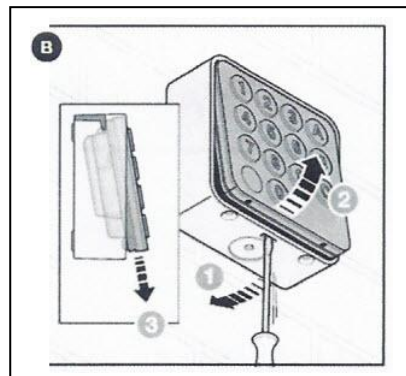
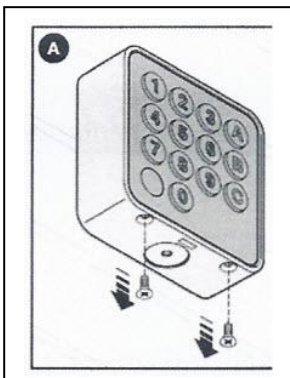
All technical specifications stated herein refer to an ambient temperature of 20° C (± 5° C)

F. **SCRAPPING THE PRODUCT**

This product is an integral part of the automation and must therefore be scrapped together with it, in the same way as indicated in the automation's instruction manual.

G. **Replacing the battery** (see figure on net page)

- 1) Replace the battery every about 12 month, or when it dead. Please recycle the battery
- 2) Remove the two screws at the bottom of the unit – Fig. A
- 3) Extract out the buttons plastic part form the metal case – Fig. B
- 4) Unscrew the battery cover with a coin and replace the battery
- 5) Pay attention to the battery cover seal
- 6) The positive poles (+) is facing you -Fig. 6
- 7) Put new battery and close back the battery cover, screw with the coin- Fig.6
- 8) Fit the plastic button unit back to the metal case – Fig. 7
- 9) Screw the two bottom screws -Fig.8



H. Programing new security codes

I. Factory Default codes

This unit has up to 3 different opening codes. For the first time, use the factory default codes of the unit. The 3 codes, one for each of the letters. are:

- 11 for letter A
- 22 for letter B
- 33 for letter C

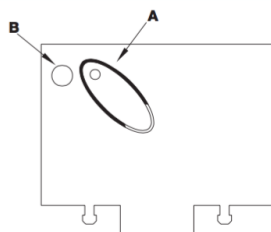
J. It is best to try to change Code C first

K. New coding procedure

- 1) Choose a letter for your new security code
- 2) Codes are usually 4 digits. optional 1 to 8 digits.
- 3) You have 6 seconds between each press, if 6 seconds pass, you will start this procedure form the beginning
- 4) Press and hold the "0" digit.
- 5) **While holding the "0" digit** - press the letter you choose A or B or C and release it
- 6) Release the "0" button
- 7) Enter the old code linked to the letter
- 8) Press the letter again
- 9) Key-in the new code
- 10) Press the letter
- 11) Key-in the code again to verify
- 12) Press the letter again

L. Example linking the code 2018 to the letter "C"

- 1) Press and hold the zero (0) button
- 2) While holding the (0) in one hand; Press and release the (C) with the other hand
- 3) Release the "0" button
- 4) Enter the code that is opening / activating your equipment. for new units use the default code – 3, 3,
- 5) Press the letter (C)
- 6) Enter the new code (1,2,3,4)
- 7) Press (C) again
- 8) Re-Enter the new code again (1,2,3,4)
- 9) End of procedure



A=Program button
B=Status LED

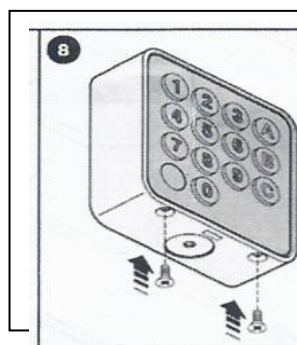
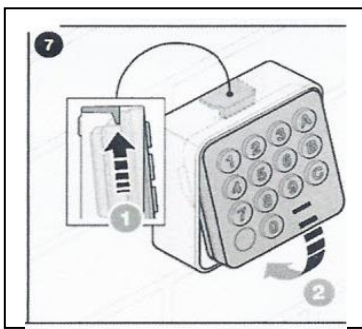
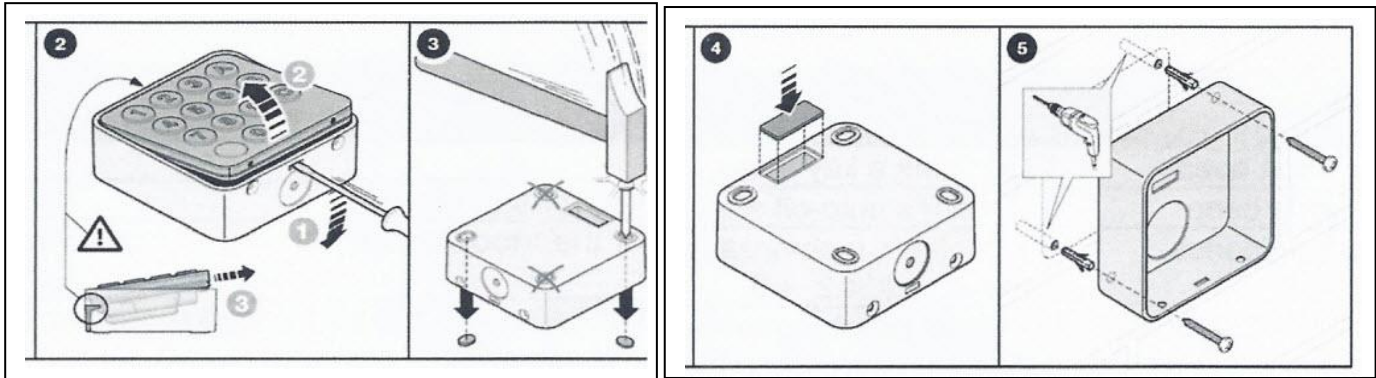
To program this key pad to a SMXI receiver (Mode 1) Press and hold button A on the receiver until the LED B lights up SOLID.

On the key pad enter

1 – 1 then **hold** the A button until you see 3 flashes on the receiver LED

N. Installation of the unit

- 1) Before installation check reception form the desired installation location
- 2) Choose a flat surface for installation, chose the right high tot be comfort for adult and or children users
- 3) Extract out the button plastic part form the metal case – Fig. 2
- 4) Punch holes in the metal case for the screws to fit it to the wall/ post
- 5) Fit the metal case of the unit to the wall / post with screws – Fig. 5
- 6) Put the rectangle black rubber par to its place – Fig. 4
- 7) Install the unit in the correct directions so the numbers and letters are facing up correctly- Fig. 5
- 8) Fit the buttons part back to the case of the unit – Fig. 7
- 9) Screw in the two screws at the bottom – Fig. 8



KINGgates S.r.l. reserves the right to apply modifications to products at any time when deemed necessary, maintaining the same intended use and functionality.

I Power: 3V CR2032. I Battery life: Approx. 2 years with 10 transmissions a day. I Radio frequency: 433.92 MHz \pm 100 kHz. I Irradiated power: Approx. 3 μ W. I Operating temperature: -10°C ... +55°C. I Security code: one or more digits (max. 8 digits). The digits must be in the range "0" to "9". I Disable security code: Yes. I Estimated range: 100 m; 20 m indoors (see note 1 to par. 3.2). I Protection rating: IP 54. I Dimensions (mm): 77 x 100 x 306. I Weight (g): 300.

CE DECLARATION OF CONFORMITY

Note: The text herein has been re-edited for editorial purposes. A copy of the original declaration can be requested from KINGgates S.r.l. (PN) Italy.

Declaration number: DIGYPAD; Revision: 0; Language: **EN**

The undersigned Giorgio Zanutto, Chief Executive Officer of KINGgates S.r.l. (via A. Malignani n042, 33077 Sacile (PN) Italy), declares under his own responsibility that the product DIGYPAD (external keyboard with radio transmitter at 433.92 MHz, with three combinations) conforms to the essential requisites of **EU Directive 1999/5/EC** (9 March 1999) in relation to its intended use. Under the terms of the said Directive (Annex V), the product is a Class 1 device and is marked CE0

Sacile, 20th November 2017

Giorgio Zanutto

General Manager